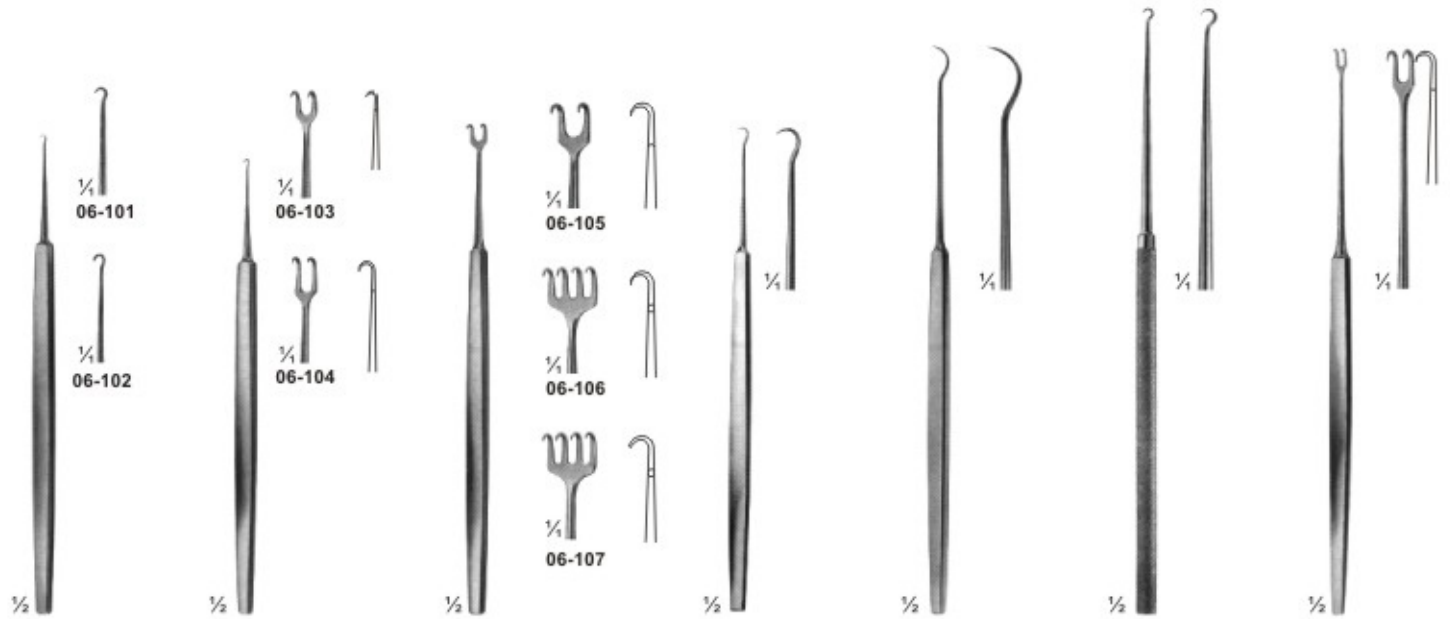


Fine Wound Retractors (Dura- and Skin Retractors) Feine Wundhakchen (Dura- und Hauthakchen)



06-101 Sharp
06-102 Blunt
GRAEFE
125 mm

06-103 125 mm
06-104 130 mm
sharp
GUTHRIE

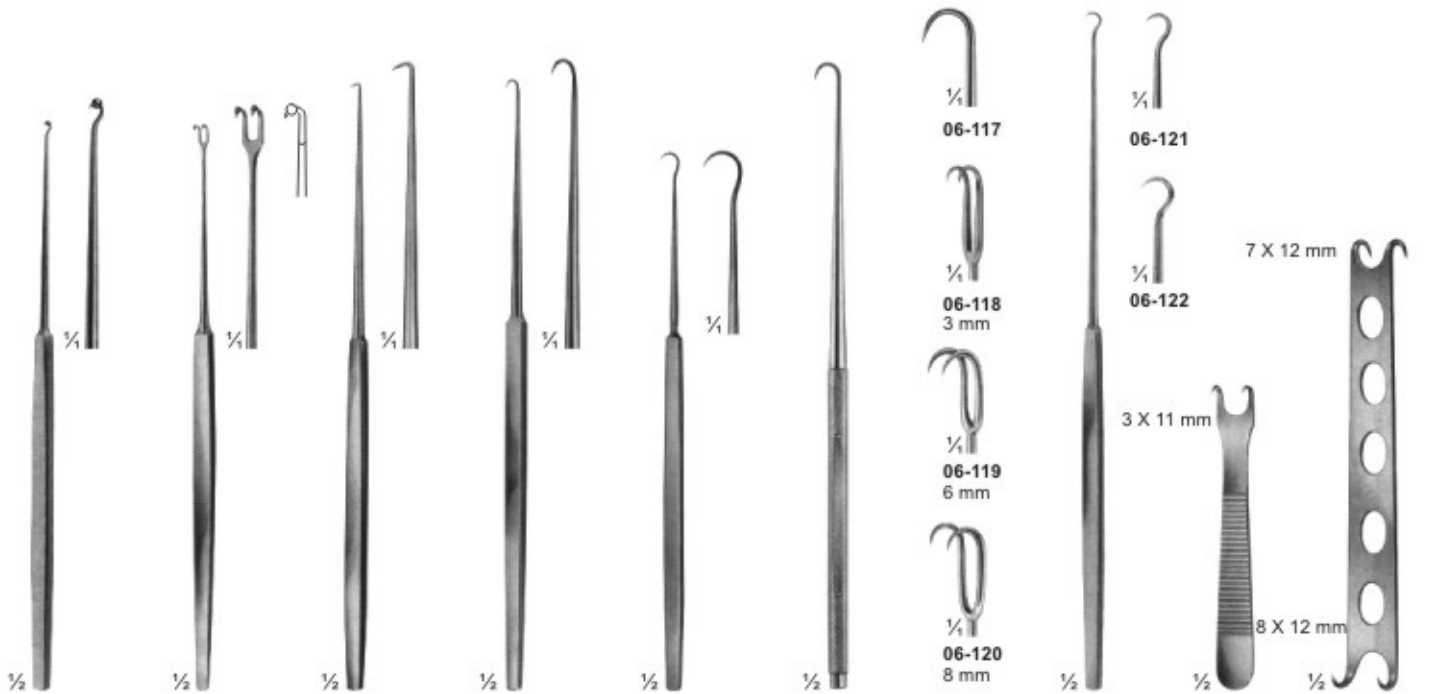
06-105 130 mm
06-106 135 mm
sharp
ROLLET
06-107 135 mm
blunt

06-108
FRAZIER
Dura retractors
130 mm

06-109
TONNIS
Dura retractors
150 mm

06-110
KILNER
160 mm

06-111
FREER
150 mm



06-112
MULLER
150 mm

06-113
MULLER
150 mm

06-114
COTTLE
160 mm

06-115
COTTLE
160 mm

06-116
JAEGER
135 mm

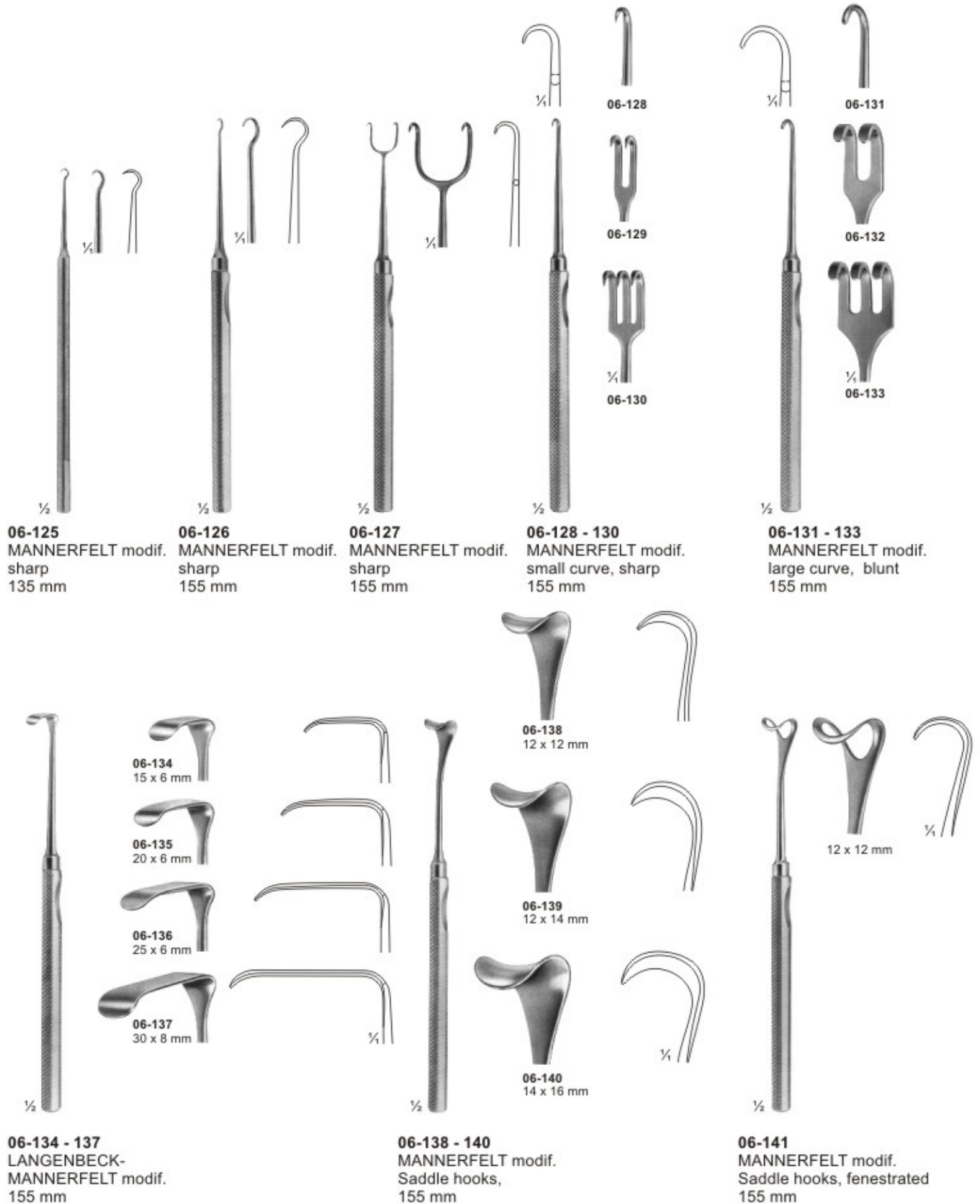
06-117 - 120
JOSEPH
165 mm

06-121 - 122
GILLIES
180 mm

06-123
KILNER
sharp
80 mm

06-124
CONVERSE
blunt
120 mm

Retractors With triangle handle Wundhaken mit Treangle-Griff



Retractors Wundhaken



1/4
6 x 12 mm

06-142
MASING
140 mm



1/4
10 x 12 mm

06-143
COTTLE
140 mm



06-144
9 x 9 mm

06-144 - 148
DESMARRES
140 mm



06-145
9 x 12 mm



06-147
12 x 16 mm



1/4
11 x 14 mm



1/4
13 x 18 mm



1/4
13 x 13 mm

06-149 - 150
KONIG
180 mm



1/4
10 x 10 mm

06-151
CUSHING-KOCHER
175 mm



1/4
12 x 16 mm

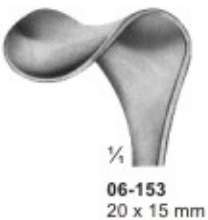


1/4

06-152 - 153
KOCHER
205 mm



1/4
20 x 12 mm

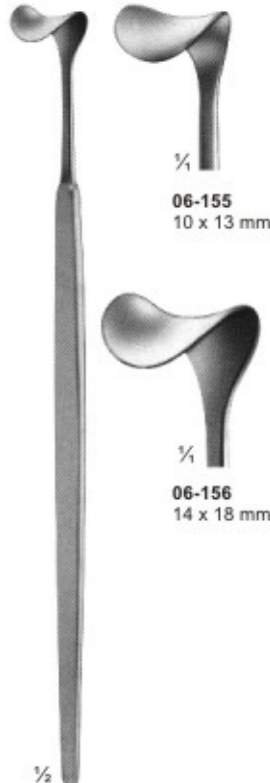


1/4
20 x 15 mm



1/4
13 x 6 mm

06-154
SCHOENBORN
200 mm



1/4
10 x 13 mm



1/4
14 x 18 mm

06-155 - 156
CUSHING
205 mm



20 x 15 mm

20 x 19 mm

06-157
205 mm



1/4
11 x 14 mm

06-158 - 160
CUSHING
250 mm

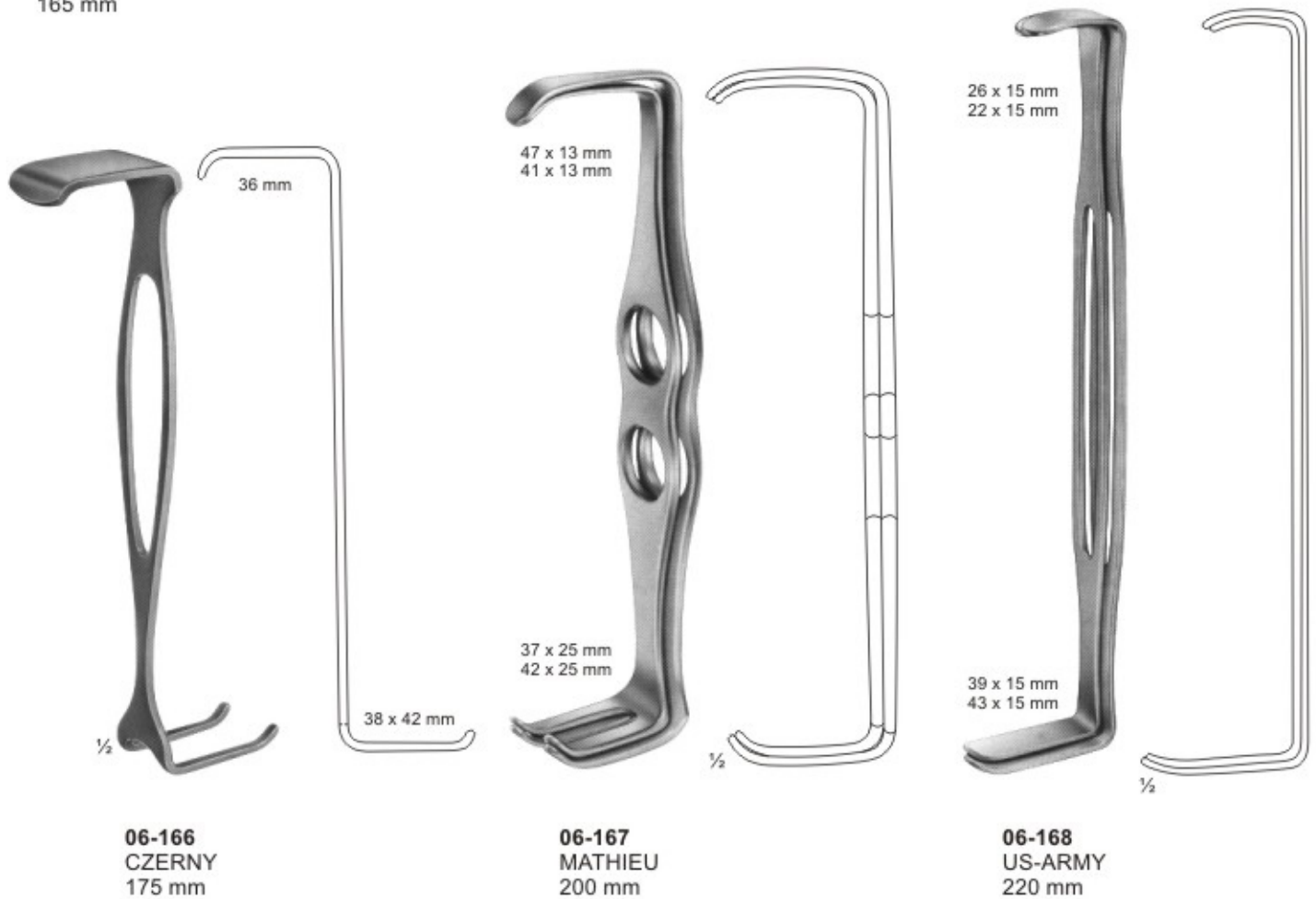
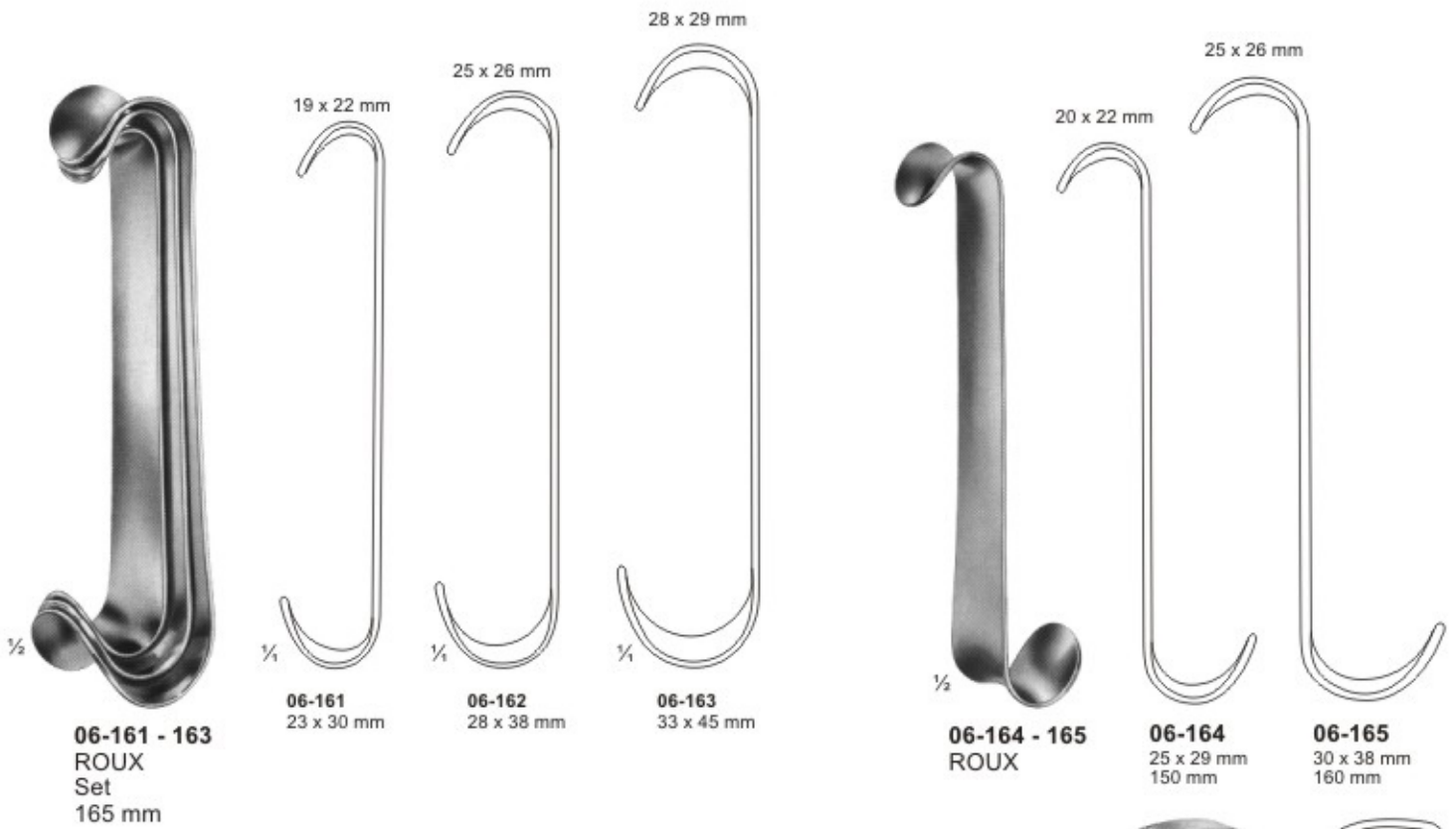


1/4
13 x 18 mm



1/4
15 x 22 mm

Retractors Wundhaken



Bone Retractors and Retractors

Knochen- und Wundhaken



06-169
KOCHER
sharp
205 mm



06-170
KOCHER
sharp
220 mm



06-171
KOCHER
sharp
220 mm



06-172
VOLKMANN
blunt
220 mm



06-173
VOLKMANN
sharp
220 mm



06-174 - 181
VOLKMANN
225 mm



Sharp

1/4



06-174
9 x 8 mm



06-175
9 x 13 mm



06-176
9 x 19 mm



06-177
9 x 29 mm



Blunt

1/4



06-178
8,5 x 8 mm



06-179
8,5 x 13 mm

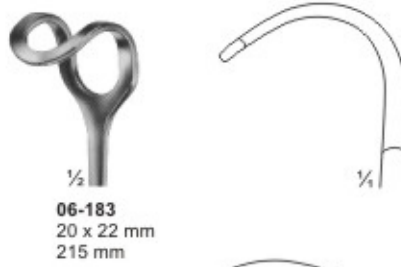


06-180
8,5 x 19 mm



06-181
8,5 x 29 mm

Retractors Wundhaken



06-182 - 184
MIDDELDORPF

06-184
28 x 28 mm
235 mm

06-185
BUCHS
205 mm

06-186
CASPAR
210 mm

06-187
KOCHER
230 mm

Retractors, Vario Retractor System Wundhaken, Vario- Wundhaken-System



- 06-188 - 194**
BRUNNER
275 mm
- 06-188** 80 x 20
- 06-189** 100 x 25
- 06-190** 120 x 25
- 06-191** 130 x 30
- 06-192** 140 x 30
- 06-193** 160 x 30
- 06-194** 180 x 30



06-195
Handle with cold
light carrier for
retractor blades.
280 mm



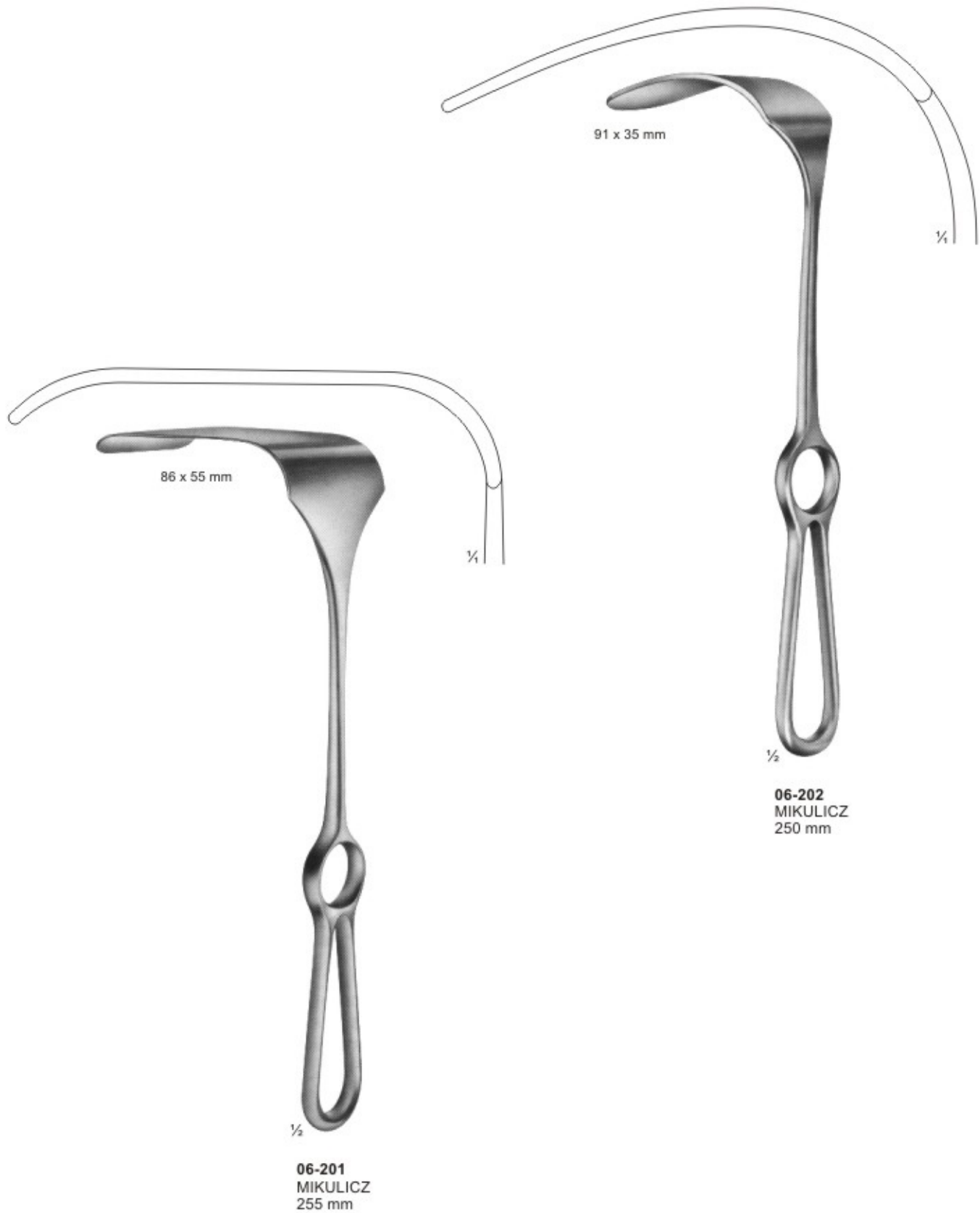
Handle arrange-
ment verriable

Retractors, Lung Spatulas Wundhaken, Lungenspatel



Retractors for deep surgery (Abdominal Retractors)

Wundhaken für Eingriffe in der Tiefe (Bauchdeckenhaken)



Retractors, Abdominal Retractors Wundhaken, Bauchdeckenhaken



- 06-214 Fig.1 32 x 40 mm
- 06-215 Fig.2 34 x 50 mm
- 06-216 Fig.3 41 x 60 mm
- 06-217 Fig.4 46 x 75 mm
- 06-218 Fig.5 64 x 85 mm

06-203 - 213
DOYEN
240 mm

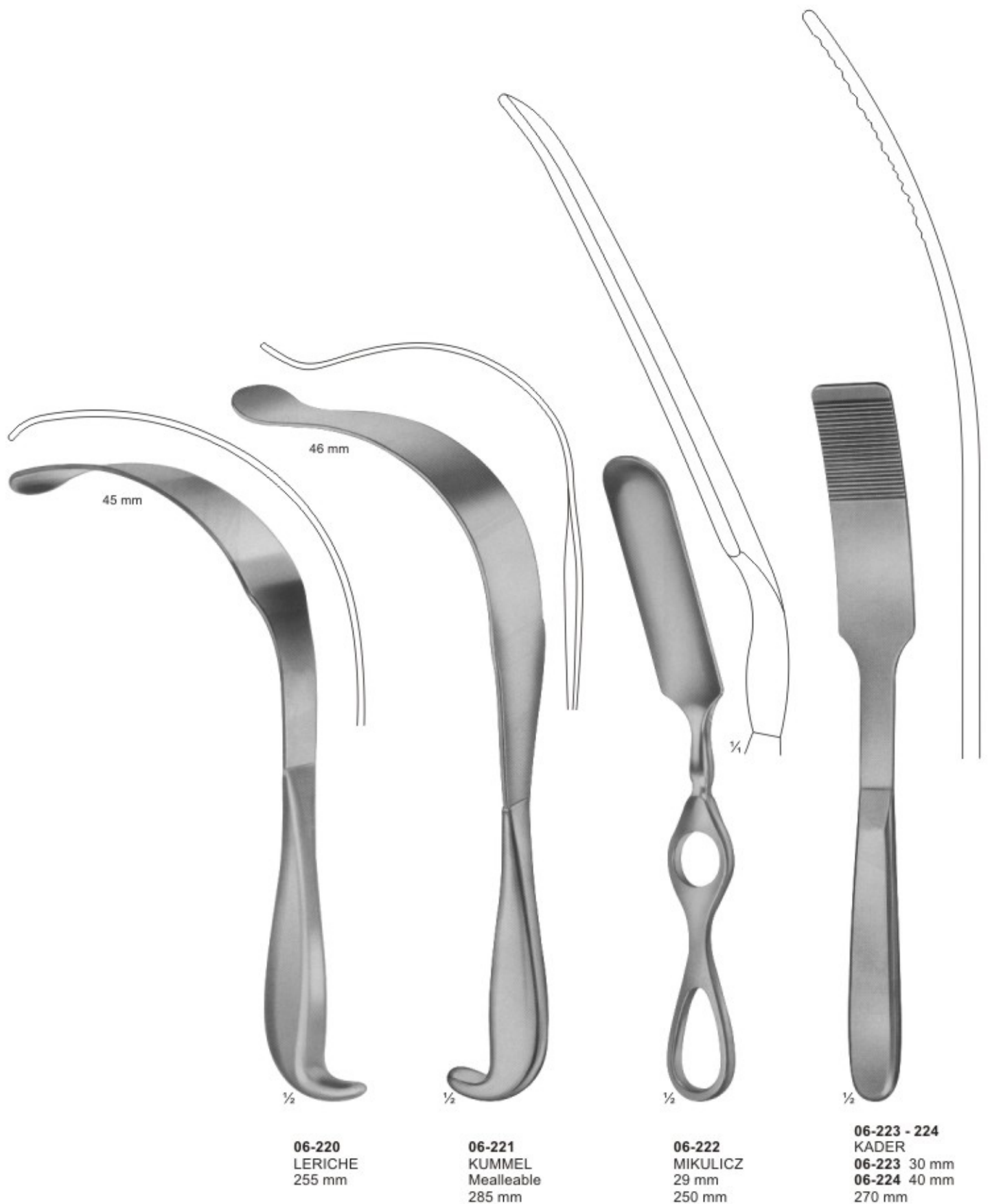
06-214 - 218
FRITSCH
240 mm

06-219
DOYEN
250 mm

	width of blades	
	35 mm, 45 mm, 60 mm	
length of blades		
62 mm	06-203, 06-204, 06-205	
92 mm	06-206, 06-207, 06-208	
122 mm	06-209, 06-210, 06-211	
160 mm	06-212, 06-213	

Abdominal- and Intestinal Spatulas

Bauch- und Darmspatel



45 mm

46 mm

1/4

1/2

1/2

1/2

1/2

06-220
LERICHE
255 mm

06-221
KUMMEL
Mealleable
285 mm

06-222
MIKULICZ
29 mm
250 mm

06-223 - 224
KADER
06-223 30 mm
06-224 40 mm
270 mm